

WHAT IS ENKIDOU® ?

- Research and Innovation projects in the field of scientific computing often require some specific developments
- ENKIDOU was created to help develop specific applications
- ENKIDOU is not a stand-alone program.
- ENKIDOU is a middleware. It is used to create other programs or applications
- ENKIDOU-based applications can be used for any engineering design and optimization problems: crash, fatigue, NVH, fluid dynamics, etc ...
- Many problems solved using ENKIDOU cannot be approached with other systems (I-Sight, NOEMIS, ...)
- Each application is specific, but ENKIDOU is always the same ...



ENKIDOU: SimTech PROPRIETARY SOFTWARE

- Java-based library for the development of custom software
- SimTech proprietary software
- Helps to focus on the engineering problem at hand
 - All/Most routine tasks are carried out in high level ENKIDOU classes
 - I/O (disk, openGL, external codes) are standardized
- Improve the quality of the application
 - Quality assurance is at ENKIDOU level
 - Each application profits from the experience of all the others
- Shorten development time
 - Factor 10 wrt Java from scratch
 - Factor 2-3 wrt to QT, open Inventor etc ...

ENKIDOU is a Java-based library of components (API) for the development of interactive, graphic environments for VERTICAL APPLICATIONS.

ENKIDOU applications can use **ENKIDOU** GUI or the customer's GUI.

ENKIDOU includes about 2000 classes.

Main features:




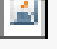
- Task structure (process automation)
- Integration between design space and CAE model
- Multi mesh model
- Data structure
- Disk I/O management
- Java/openGL link
- High level components

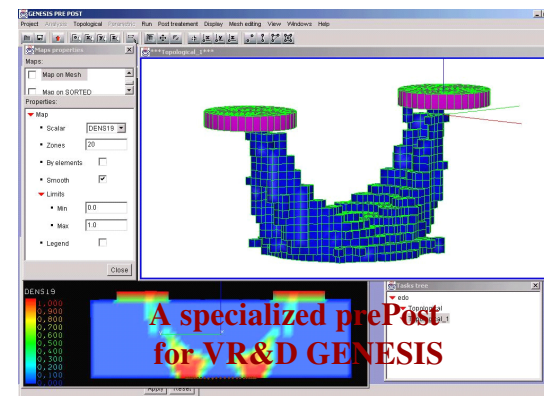
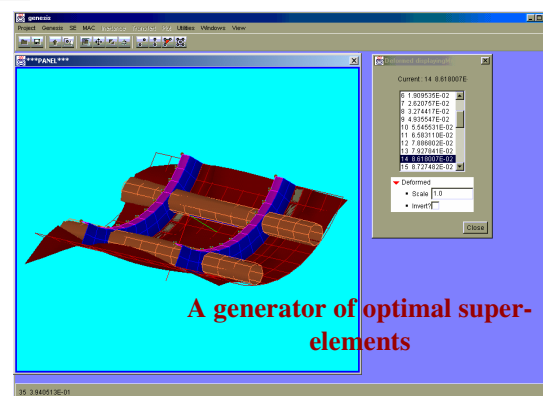
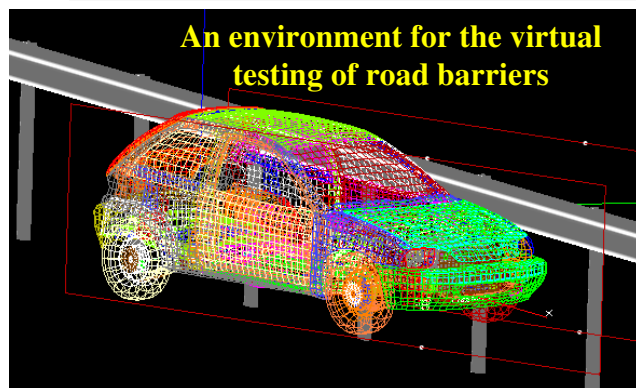
BUSINESS MODEL CUSTOM SOFTWARE

MOST SimTech PROJECTS INVOLVE THE
DEVELOPMENT OF SPECIFIC SOFTWARE

- ENKIDOU is the property of SimTech
- The application is the property of the Client

WE USE OUR ENKIDOU™ API TO DEVELOP CUSTOM
APPLICATIONS

 application.jar	347 Ko	Executable Jar File	16/06/2009 06:53
 enkidou.jar	2 186 Ko	Executable Jar File	16/06/2009 06:52
 enkidou.jar	987 Ko	Executable Jar File	16/06/2009 06:53
 ugl_windows.jar	13 Ko	Executable Jar File	27/09/2004 16:59



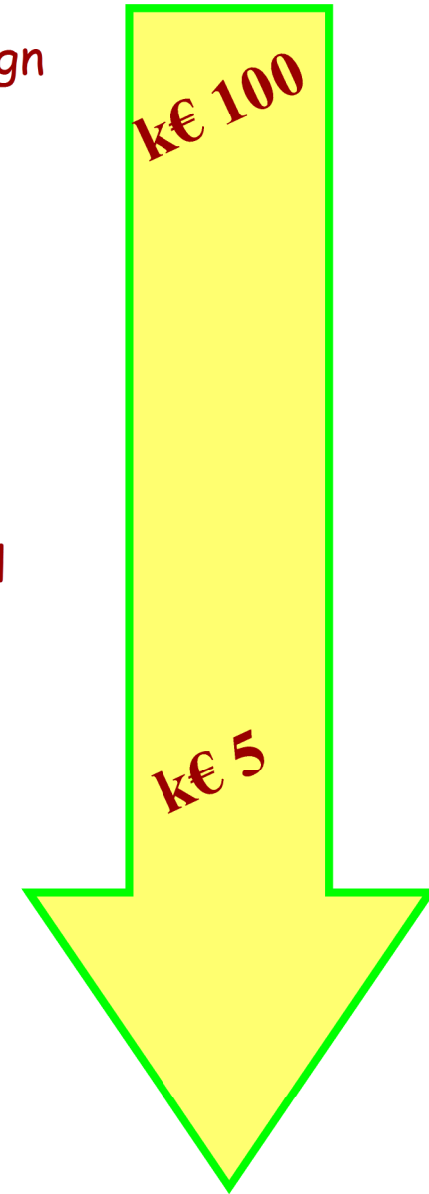
SOME ENKIDOU APPLICATIONS ARE AVAILABLE FOR SALE

BarrLier: virtual testing of road
restraining systems
(marketed by LIER)

EnkiBonnet: bonnet design for
pedestrian compliance
(marketed by SimTech)

Recent ENKIDOU Applications

- *Roller Bearing Maker*: Knowledge-based product design
- *Certified Test Lab*: Virtual testing of road barriers
- *Engineering conglomerate*: MDO for rail transport systems
- *Automotive OEM*: Assembly line simulation
- *Automotive OEM*: Crushed beam optimal design
- (several customers): Composite design
- *Automotive OEM*: Springback compensation for metal forming tools
- *Automotive OEM* : Fatigue analysis
- *Software Vendor*: Metal forming tool generation
- *Internal Sim Tech*: Pedestrian compliance design of bonnets, Super element design, Vibration analysis, Statistical analysis tools, ...



What is ENKIDOU ?

Java-based library for the development of custom software

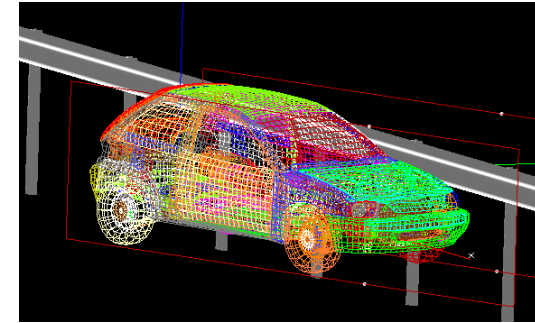
ANALYSIS

PARAMETRIC

TOPOLOGY

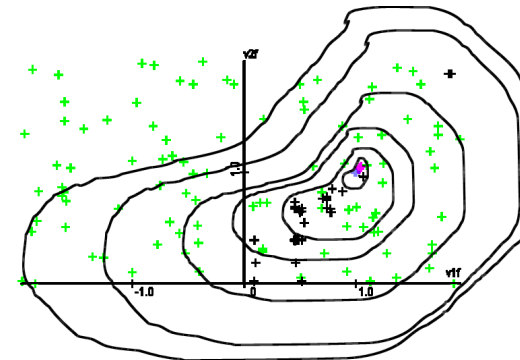
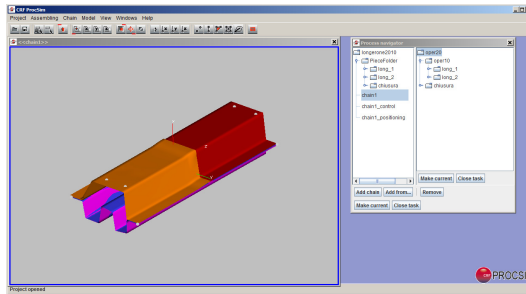
ANALYSIS

**OBJECT ORIENTED
DATA STRUCTURES**



**CAE MODEL
EXT. SOLVERS**

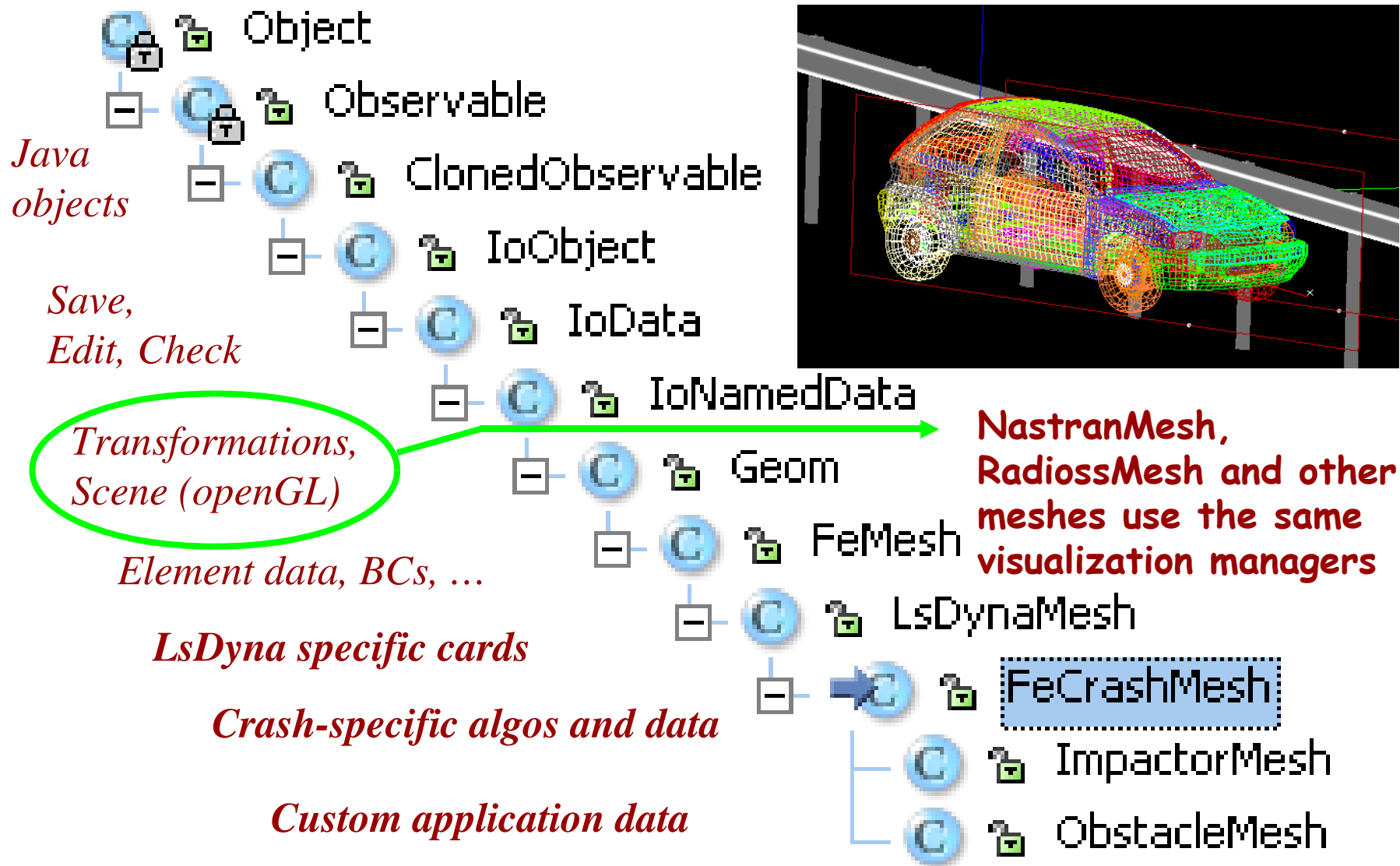
**OPTIMIZATION
(VARIABILITY)**

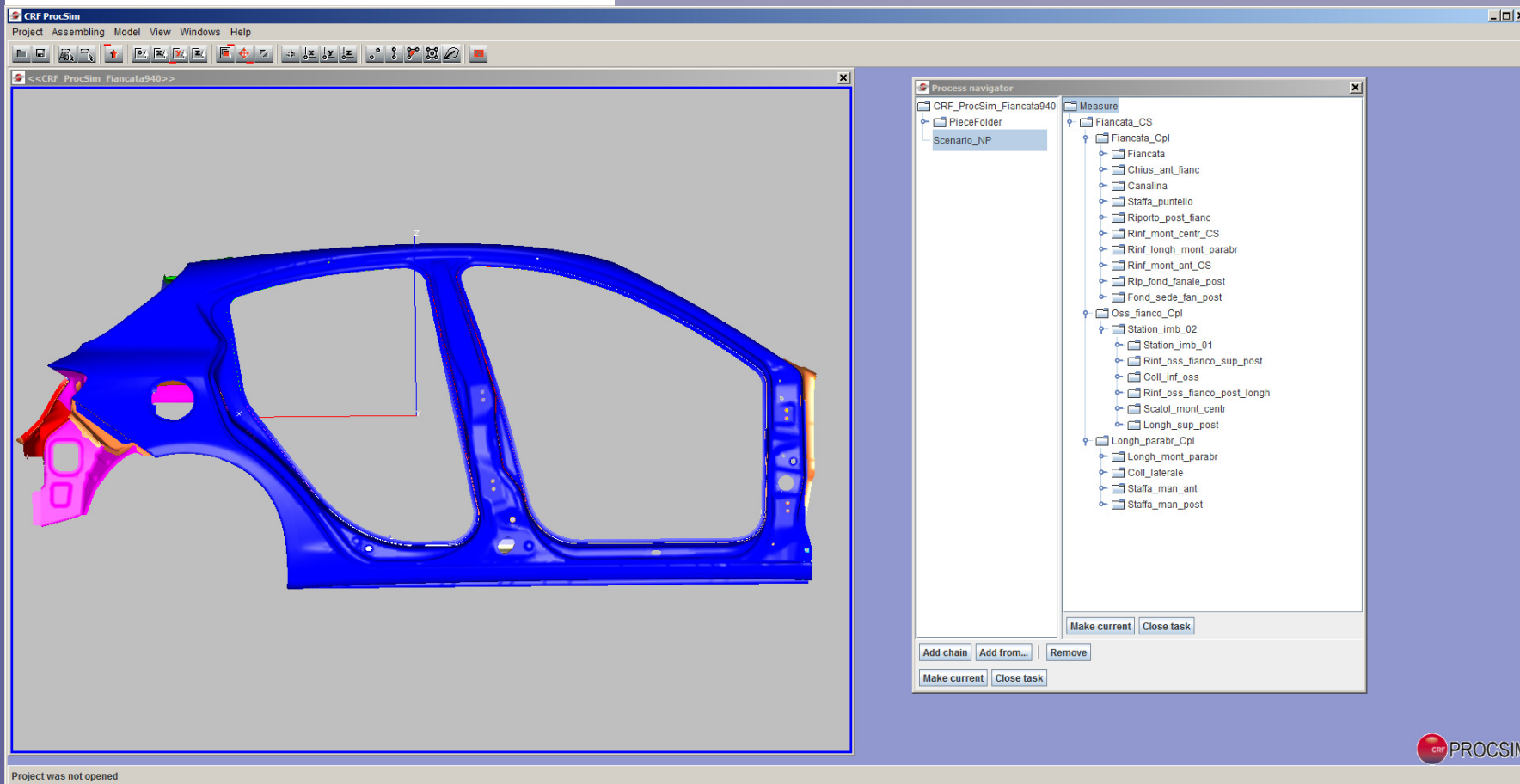


**PROCESS
AUTOMATION**

**2D – 3D GRAPHICS
GUI**

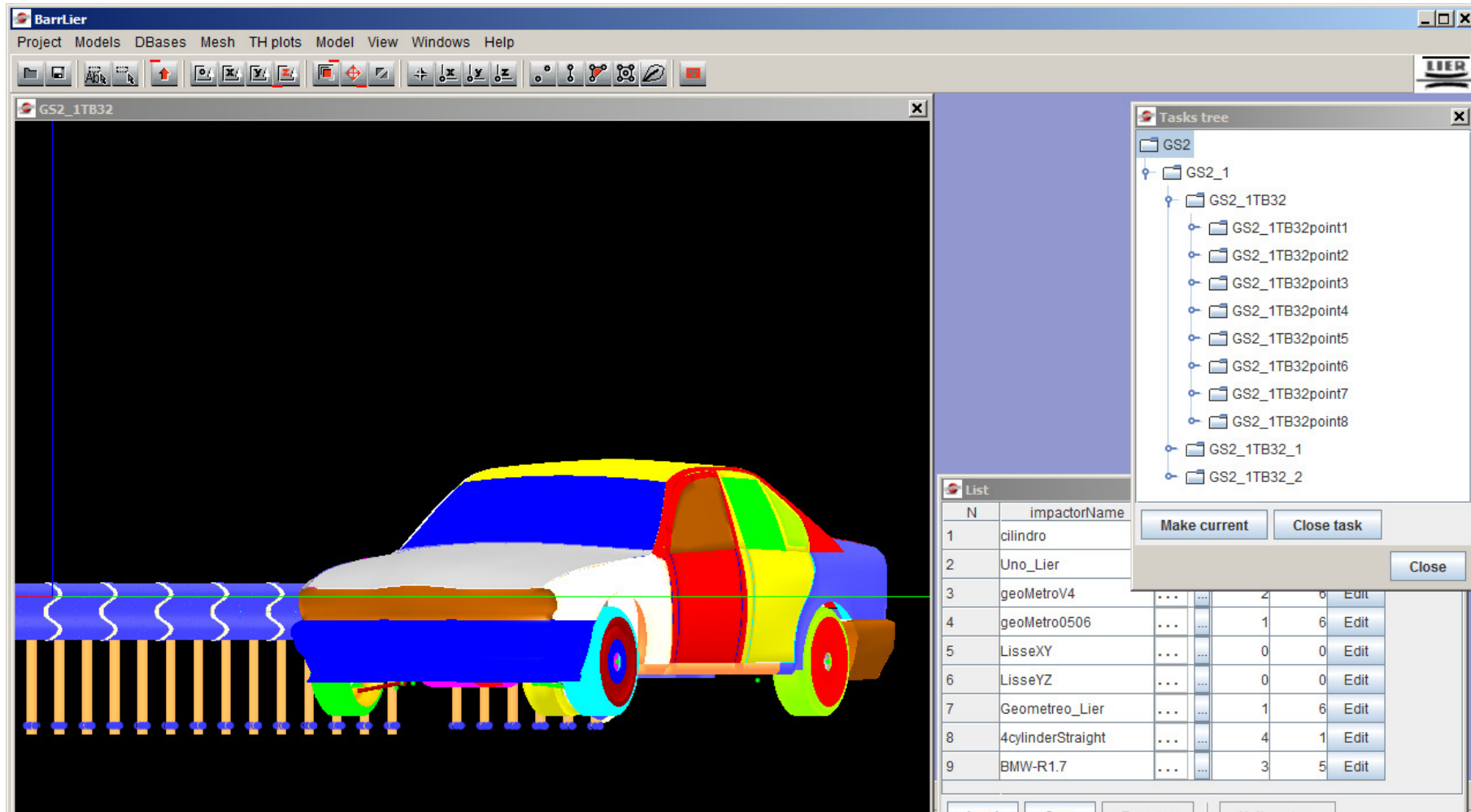
ENKIDOU IoData: specialized database for scientific computing





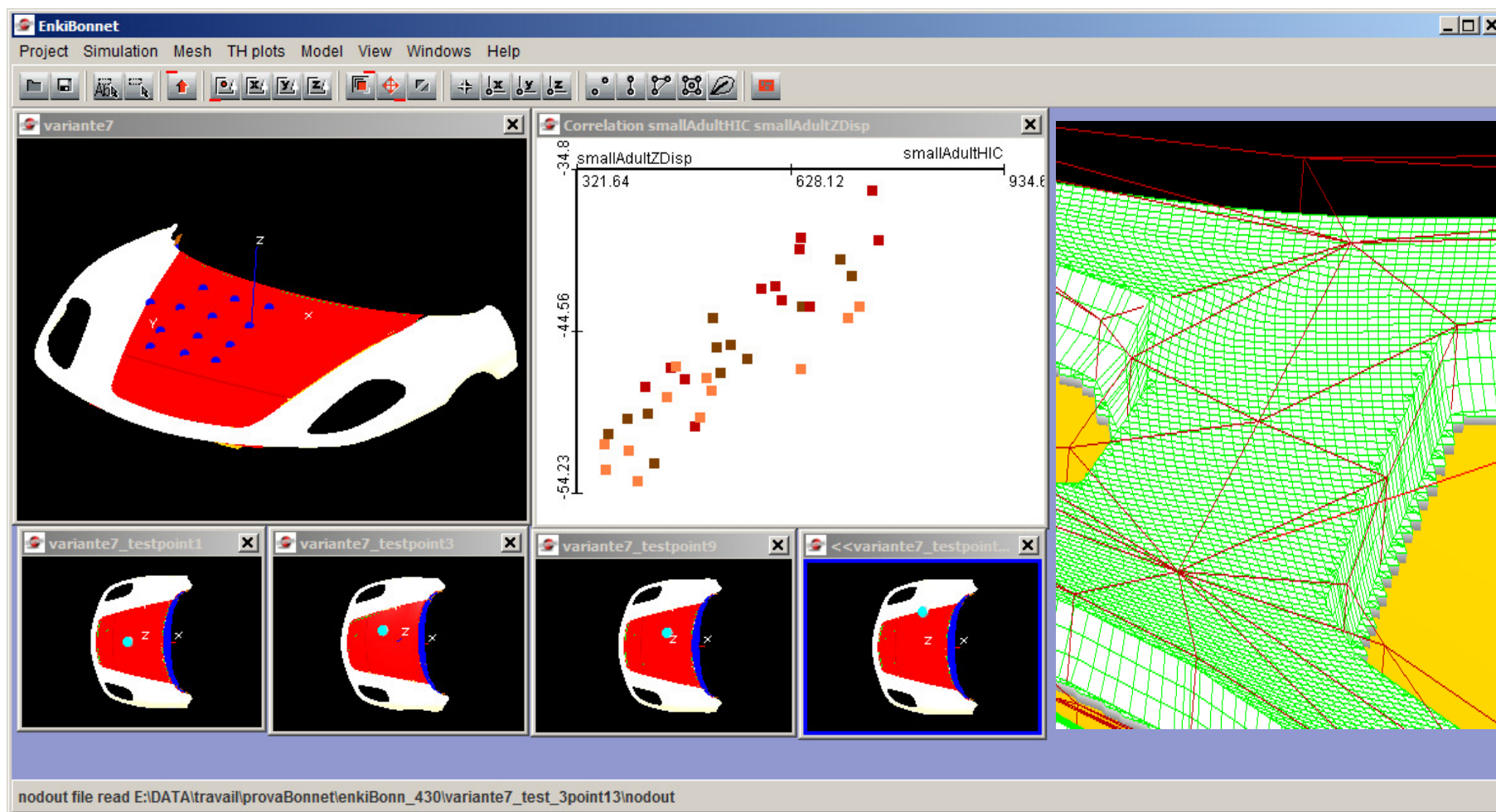
Assembly Simulation

BarrLier



Road Barrier Virtual Testing

EnkiBonnet



Bonnet Design for Pedestrian Safety